

Product Sheet

H_GDF15 Reporter 293 DDX35™ Cell Line

Catalog number: GM-C28579

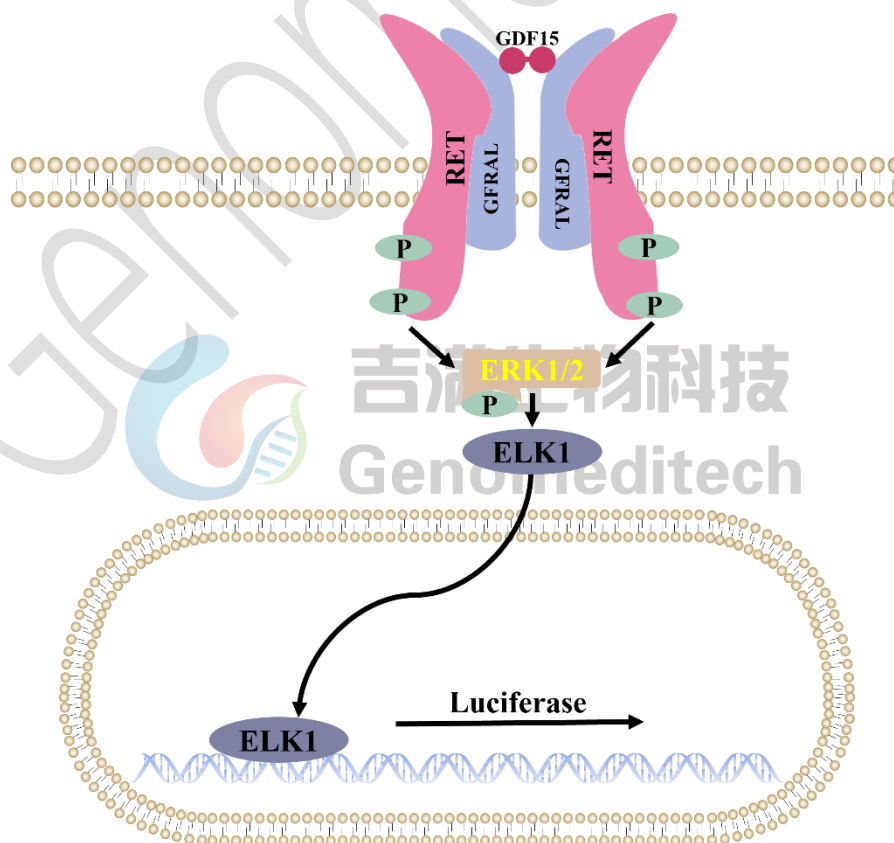
Version 3.3.1.241128

Growth differentiation factor 15 (GDF15) is a distant member of the transforming growth factor (TGF)- β family and is a secreted protein that circulates as a 25 kDa dimer. It is a protein belonging to the transforming growth factor β superfamily.

The glial cell line-derived neurotrophic factor (GDNF) family receptor alpha (GFRAL) is the sole receptor for GDF15. GDF15 binds to GFRAL with high affinity but does not interact with other members of the GDNF receptor family.

H_GDF15 Reporter 293 DDX35™ Cell Line is a clonal stable HEK-293 cell line constructed using lentiviral technology, constitutive expression of the human GFRAL gene and human RET, along with signal-dependent expression of a luciferase reporter gene. When GDF15 binds to GFRAL-RET, it activates downstream signaling pathways, leading to the expression of luciferase. The luciferase activity measurement indicates the activation level of the signaling pathway and can thus be used to evaluate the in vitro effects of drugs related to this signaling pathway.

H_GDF15 Reporter 293 DDX35™ Cell Line was obtained through extensive monoclonal screening and multiple rounds of monoclonal selection. It possesses high stability, high sensitivity, and high amplification properties, meeting the standards for customers' batch library construction and release experiments.



Specifications

Quantity	5E6 Cells per vial, 1 mL
Product Format	1 vial of frozen cells
Shipping	Shipped on dry ice
Storage Conditions	Liquid nitrogen immediately upon receipt
Recovery Medium	DMEM +10% FBS+1% P.S
Growth medium	DMEM+10% FBS+1% P.S+1.5 µg/mL Blasticidin+400 µg/mL G418+125 µg/mL Hygromycin+0.75 µg/mL Puromycin
Note	None
Freezing Medium	90% FBS+10% DMSO
Growth properties	Adherent
Growth Conditions	37°C, 5% CO ₂
Mycoplasma Testing	The cell line has been screened to confirm the absence of Mycoplasma species.
Safety considerations	Biosafety Level 2
Note	It is recommended to expand the cell culture and store a minimum of 10 vials at an early passage for potential future use.

Materials

Reagent	Manufacturer/Catalogue No.
DMEM	Gibco/C11995500BT
Fetal Bovine Serum	Cegrogen biotech/A0500-3010
Pen/Strep	Thermo/15140-122
Blasticidin	Genomeditech/ GM-040404
G418	Genomeditech/ GM-040402
Hygromycin	Genomeditech/ GM-040403
Puromycin	Genomeditech/ GM-040401
Recombinant Human GDF-15 (Human Cell-expressed) Protein	R&D SYSTEMS/8146-GD-010/CF
Anti-H_GFRAL hIgG4 Antibody(QUEL-0301)	Genomeditech/ GM-71276AB
GMOne-Step Luciferase Reporter Gene Assay Kit	Genomeditech/ GM-040503

Figures

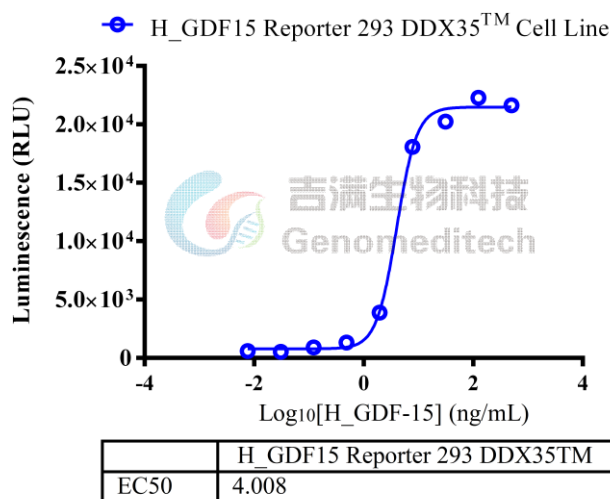


Figure 1 | Response to Recombinant Human GDF-15 (Human Cell-expressed) Protein. The H_GDF15 Reporter 293 DDX35TM Cell Line (Cat. GM-C30855) at a concentration of 1.5E4 cells/well (96-well format) was stimulated with serial dilutions of Recombinant Human GDF-15 (Human Cell-expressed) Protein (R&D SYSTEMS/8146-GD-010/CF) in assay buffer (DMEM + 1% FBS + 1% P.S) for 16 hours. The firefly luciferase activity was measured using the GMPOne-Step Luciferase Reporter Gene Assay Kit (Cat. [GM-040503](#)). The maximum induction fold was approximately [43.2]. Data are shown by drug mass concentration.

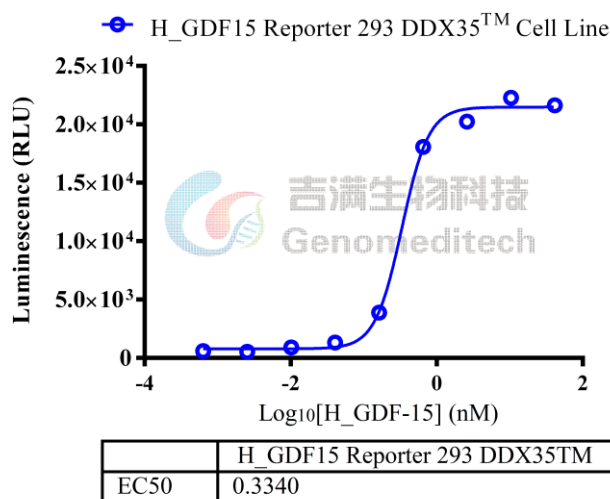


Figure 2 | Response to Recombinant Human GDF-15 (Human Cell-expressed) Protein. The H_GDF15 Reporter 293 DDX35TM Cell Line (Cat. GM-C30855) at a concentration of 1.5E4 cells/well (96-well format) was stimulated with serial dilutions of Recombinant Human GDF-15 (Human Cell-expressed) Protein (R&D SYSTEMS/8146-GD-010/CF) in assay buffer (DMEM + 1% FBS + 1% P.S) for 16 hours. The firefly luciferase activity was measured using the GMPOne-Step Luciferase Reporter Gene Assay Kit (Cat. [GM-040503](#)). The maximum induction fold was approximately [43.2]. Data are shown by drug molar concentration.

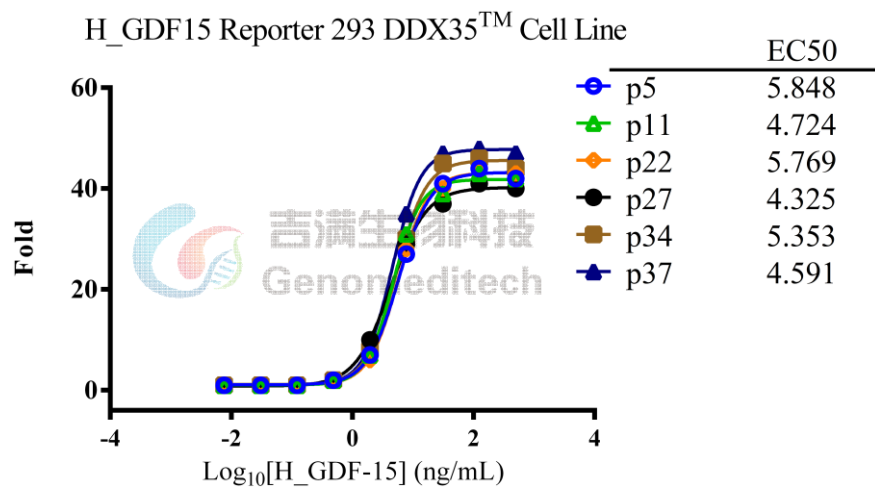


Figure 3 | The passage stability of response to Recombinant Human GDF-15 (Human Cell-expressed) Protein. The passage 5, 11, 22, 27, 34 and 37 of H_GDF15 Reporter 293 DDX35TM Cell Line (Cat. GM-C28579) at a concentration of 1.5E4 cells/well (96-well format) were stimulated with serial dilutions of Recombinant Human GDF-15 (Human Cell-expressed) Protein (R&D SYSTEMS/8146-GD-010/CF) in assay buffer (DMEM + 1% FBS + 1% P.S) for 16 hours. The firefly luciferase activity was measured using the GMPOne-Step Luciferase Reporter Gene Assay Kit (Cat. [GM-040503](#)). Data are shown by drug mass concentration.

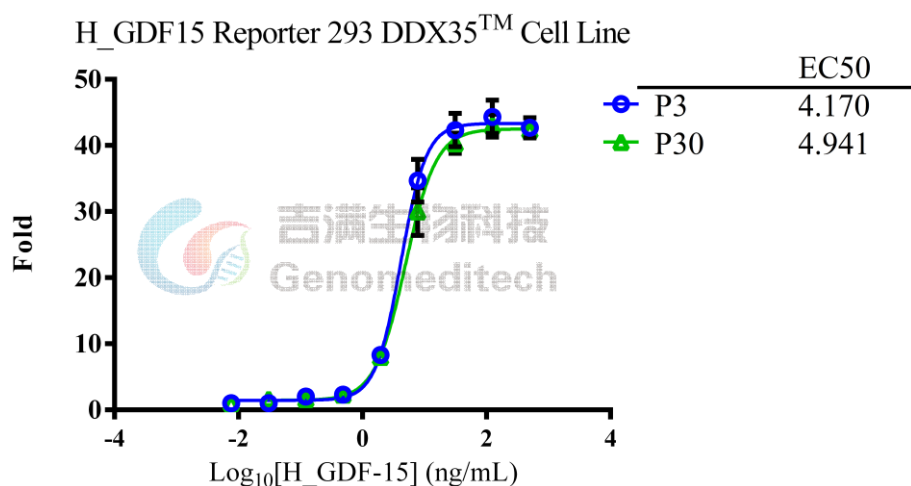


Figure 4 | The passage stability of response to Recombinant Human GDF-15 (Human Cell-expressed) Protein. The passage 3 and 30 of H_GDF15 Reporter 293 DDX35TM Cell Line (Cat. GM-C28579) at a concentration of 1.5E4 cells/well (96-well format) were stimulated with serial dilutions of Recombinant Human GDF-15 (Human Cell-expressed) Protein (R&D SYSTEMS/8146-GD-010/CF) in assay buffer (DMEM + 1% FBS + 1% P.S) for 16 hours. The firefly luciferase activity was measured using the GMPOne-Step Luciferase Reporter Gene Assay Kit (Cat. [GM-040503](#)). Data are shown by drug mass concentration.

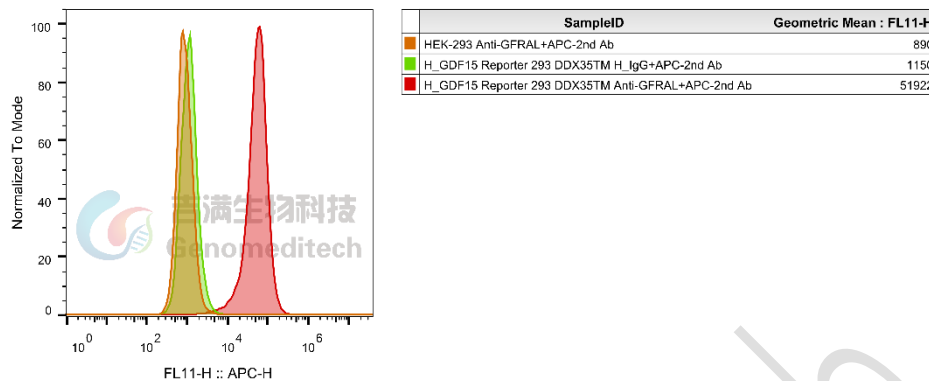


Figure 5 | H_GDF15 Reporter 293 DDX35™ Cell Line (Cat. GM-C28579) was determined by flow cytometry using Anti-H_GFRAL Antibody(QUEL-0301) (Cat. [GM-71276AB](#)).

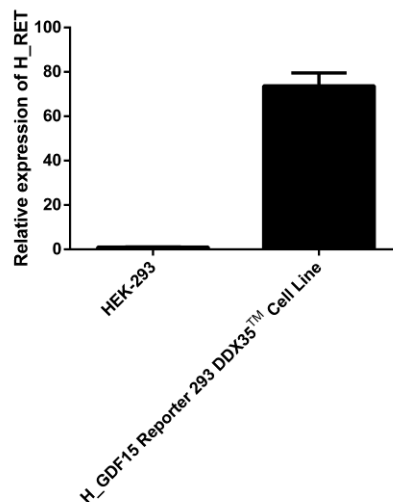


Figure 6 | The mRNA expression levels of H_RET in the H_GDF15 Reporter 293 DDX35™ Cell Line (Cat. GM-C28579) were determined by RT-qPCR.

Cell Recovery

Recovery Medium: DMEM +10% FBS+1% P.S

To insure the highest level of viability, thaw the vial and initiate the culture as soon as possible upon receipt. If upon arrival, continued storage of the frozen culture is necessary, it should be stored in liquid nitrogen vapor phase and not at -70°C. Storage at -70°C will result in loss of viability.

- Thaw the vial by gentle agitation in a 37°C water bath. To reduce the possibility of contamination, keep the O-ring and cap out of the water. Thawing should be rapid (approximately 2 - 3 minutes).

- b) Remove the vial from the water bath as soon as the contents are thawed, and decontaminate by dipping in or spraying with 70% ethanol. All of the operations from this point on should be carried out under strict aseptic conditions.
- c) Transfer the vial contents to a centrifuge tube containing 5.0 mL complete culture medium and spin at approximately $176 \times g$ for 5 minutes. Discard supernatant.
- d) Resuspend cell pellet with the recommended recovery medium. And dispense into appropriate culture dishes.
- e) Incubate the culture at 37°C in a suitable incubator. A 5% CO₂ in air atmosphere is recommended if using the medium described on this product sheet.

Cell Freezing

Freezing Medium: 90% FBS+10% DMSO

- a) Centrifuge at $176 \times g$ for 3 minutes to collect cells.
- b) Resuspend the cells in pre-cooled freezing medium and adjust the cell density to 5E6 cells/mL.
- c) Aliquot 1 mL into each vial.
- d) Place the vial in a controlled-rate freezing container and store at -80°C for at least 1 day, then transfer to liquid nitrogen as soon as possible.

Cell passage

Growth medium: DMEM+10% FBS+1% P.S+1.5 µg/mL Blasticidin+400 µg/mL G418+125 µg/mL Hygromycin+0.75 µg/mL Puromycin

For the first 1 to 2 passages post-resuscitation, use the recovery medium. Once the cells have stabilized, switch to a growth medium.

- a) Subculturing is necessary when the cell density reaches 80%. It is recommended to perform subculturing at a ratio of 1:3 to 1:4 every 2-3 days. Ensure that the density does not exceed 80%, as overcrowding can lead to reduced viability due to compression.
- b) Remove and discard culture medium.
- c) Briefly rinse the cell layer with PBS to remove all traces of serum that contains trypsin inhibitor.
- d) Add 1.0 mL of 0.25% (w/v) Trypsin-EDTA solution to dish and observe cells under an inverted microscope until cell layer is dispersed (usually within 30 to 60 seconds at 37°C).
- e) Note: To avoid clumping do not agitate the cells by hitting or shaking the flask while waiting for the cells to detach. Cells that are difficult to detach may be placed at 37°C to facilitate dispersal.
- f) Add 2.0 mL of growth medium to mix well and aspirate cells by gently pipetting.
- g) After centrifugation, resuspend the pellet and add appropriate aliquots of the cell suspension to new culture vessels.
- h) Incubate cultures at 37°C.

Subcultivation Ratio: A subcultivation ratio of 1:3 - 1:4 is recommended

Medium Renewal: Every 2 to 3 days

Notes

- Upon initial thawing, a higher number of dead cells is observed, which is a normal phenomenon. Significant improvement is seen after adaptation. Once the cells reach a stable state, the number of dead cells decreases after subculturing and the cell growth rate becomes stable.
- Ensure that the cell density does not exceed 80%, as overcrowding may lead to reduced viability due to compression.

Related Products

GDF15 GFRAL	
H_GDF15 Reporter 293 Cell Line	Mouse_GDF15 Reporter 293 Cell Line
Membrane Bound H_GDF15 CHO-K1 Cell Line	
Anti-GDF15 hIgG1 Reference Antibody(Ponsbio)	Anti-H_GDF15 hIgG4 Antibody(CTL-002)
Anti-H_GFRAL hIgG4 Antibody(QUEL-0301)	
Biotinylated Human GFRAL Protein; His-Avi Tag	Human GFRAL Protein; His Tag
Human pro-GDF15 Protein; His Tag	

Limited Use License Agreement

Genomeditech (Shanghai) Co., Ltd grants to the Licensee all intellectual property rights, exclusive, non-transferable, and non-sublicensable rights of the Licensed Materials; Genomeditech (Shanghai) Co., Ltd will retain ownership of the Licensed Materials, cell line history packages, progeny, and the Licensed Materials including modified materials.

Between Genomeditech (Shanghai) Co., Ltd, and Licensee, Licensee is not permitted to modify cell lines in any way. The Licensee shall not share, distribute, sell, sublicense, or otherwise provide the Licensed Materials, or progenitors to third parties such as laboratories, departments, research institutions, hospitals, universities, or biotechnology companies for use other than for the purpose of outsourcing the Licensee's research.

Please refer to the Genomeditech Cell Line License Agreement for details.